



Aspen Square Condominium Hotel Fact Sheet

HOTEL DETAILS:

Aspen Square Condominium Hotel offers comfortable condominium lodging for nightly rental. Aspen Square's 100 suites include 66 fireplace studios, 5 one-bedroom/one-bath suites, 23 two-bedroom/two-bath suites, and 6 one-of-a-kind accommodations including, 1 three-bedroom/three-bath and 1 Four-bedroom/four bath suites.

Full hotel-style services include front desk, concierge and bell assistance, daily housekeeping, 24-hour maintenance and security. The property includes a heated outdoor swimming pool, two hot tubs, a private fitness center and complimentary underground parking under each building.

The hotel also has a 900 square-foot conference room which can be set up in a variety of seating options. Depending on seating configuration, the conference room can comfortably accommodate up to 36 people for a meeting or many more for small cocktail parties or receptions.

All accommodations regardless of size contain the following amenities:

- Fully equipped kitchen
- Private balcony
- Wood-burning fireplace (wood provided)
- Comfortable living/dining areas
- Flat-screen TV and DVD player
- Central air-conditioning
- In-room safe, robes, humidifier, hairdryer
- Bathroom toiletries

FIREPLACE STUDIOS (66):



Most studios include a king bed + queen sleeper sofa.
One room, 500 square feet/46.5 square meters
Fully equipped kitchen
Sitting/dining area with wood-burning fireplace
Private balcony
North or south mountain views

ONE-BEDROOM/ONE-BATH (5):



Two rooms, approximately 700 square feet/65 square meters
Bedroom is separate from living/dining/kitchen areas.
Fully equipped kitchen
Wood-burning fireplace
Private balcony
Most have a queen sleeper sofa.
Southeast or southwest mountain views



TWO-BEDROOM/TWO-BATH (23):



Three rooms, approximately 1,000 square feet/93 square meters
 King in Primary, king, or twins in second bedroom
 Fully equipped kitchen
 Living/dining room with wood-burning fireplace
 Most have a queen sleeper sofa
 Private balcony
 South view

ONE-OF-A-KIND SUITES (6):

#220: ONE BEDROOM/TWO-BATH Photos coming soon.

Approximately 1,000 square feet/93 square meters
 Fully equipped kitchen w/ beverage refrigerator
 Living/dining room with balcony
 Bedroom King Bed and ensuite bathroom w/ enclosed glass shower
 Bathroom 2 is Full bath with enclosed glass shower/ soaking tub.
 American Leather King sofa bed that provides the comfort of a real bed in living area. Closing doors between the bedroom and living room provide complete privacy for guests or a family.
 Two wood-burning fireplaces
 Double balcony/patio also in Primary bedroom
 Washer/Dryer in unit.

#314: ONE-BEDROOM/TWO-BATH STANDARD



Approximately 1,000 square feet/93 square meters
 Fully equipped kitchen
 Living/dining room
 Two wood-burning fireplaces
 Powder/dressing room plus two full baths
 Two balconies
 Third floor, south view

#418: ONE-BEDROOM/TWO-BATH PREMIUM



Approximately 1,000 square feet/93 square meters
 Fully equipped kitchen
 Living/dining room with balcony
 Two wood-burning fireplaces
 Balcony in Primary bedroom
 Spacious Primary bath
 Fourth floor, corner, south view



ASPEN SQUARE

CONDOMINIUM HOTEL IN DOWNTOWN ASPEN

#130: TWO-BEDROOM/THREE-BATH + DEN



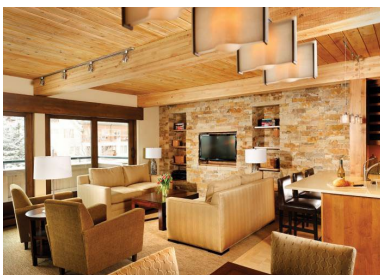
Approximately 1,000+ square feet/93 square meters
 Two bedrooms + sleeping den.
 Fully equipped kitchen
 Living area with double balcony
 Wood-burning fireplace
 Top floor, south view

#110: FOUR BEDROOM/ FOUR BATH PREMIUM



Approximately 2,000 square feet/186 square meters
 fully equipped Italian marble kitchen with Wolf and SubZero Appliances
 open concept living and dining area.
 Gas fireplace in living area and Primary 1 bedroom
 Double private patio facing Aspen Mountain
 Bedroom 1- King w/ fireplace, ensuite bathroom with double vanity and large closet.
 Bedroom 2- Twins/Split King, bathroom tub/shower in glass w/ separate water closet and washer and dryer.
 (Entire area has door for entry)
 Bedroom 3- King bed, ensuite bathroom with curb less shower
 Bedroom 4- Queen bunk beds, and adjacent full bathroom.
 4 FULL bathrooms included bidet w heat seat and low curb entry showers and make up lighting.

#126: THREE-BEDROOM/THREE-BATH PREMIUM



Approximately 1,700 square feet/158 square meters
 Fully equipped kitchen

| 800-862-7736 | 970-925-1000 | www.aspensquarehotel.com | reservations@aspensquarehotel.com



Living/dining area with wood-burning fireplace
Top floor, corner apartment
Two private balconies
Wood-burning fireplace in Primary bedroom
King in Primary, king or twins in bedrooms 2 and 3
Three en suite baths
South view